

4-BEDROOM TOWNHOUSE  
TYPE 4B2

END UNIT  
TOTAL AREA: 293.40 SQM | 3,158.12 SQFT



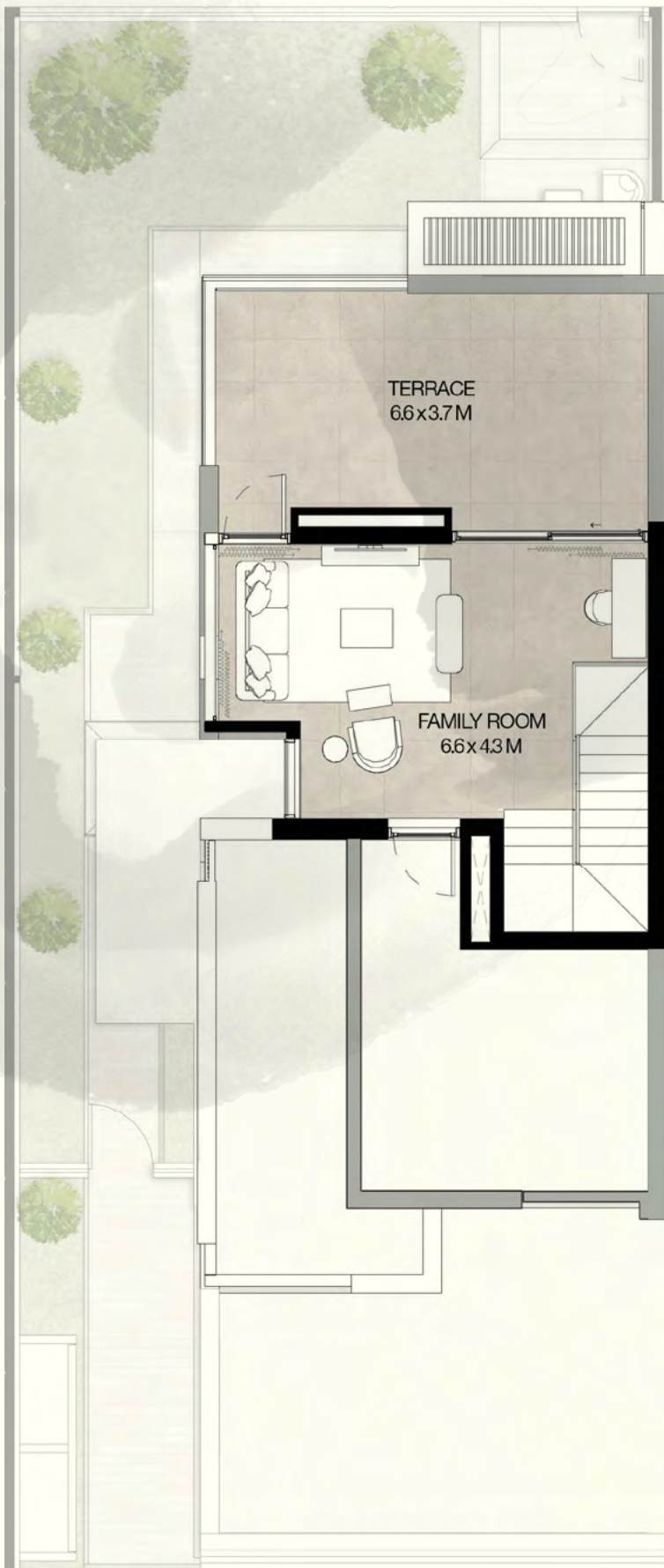
KEY PLAN



GROUND FLOOR



FIRST FLOOR



ROOF FLOOR

Disclaimer: Plans, details and unit orientation included are indicative only and are subject to change by the developer/seller at its sole discretion without notice and/or liability. All images, including features, finishes, furnishings, view and scale are illustrative only. Final areas, orientation, dimensions, layout and materials may differ from those stated.



4-BEDROOM TOWNHOUSE  
TYPE 4B2 (M)

END UNIT  
TOTAL AREA: 293.40 SQM | 3,158.12 SQFT



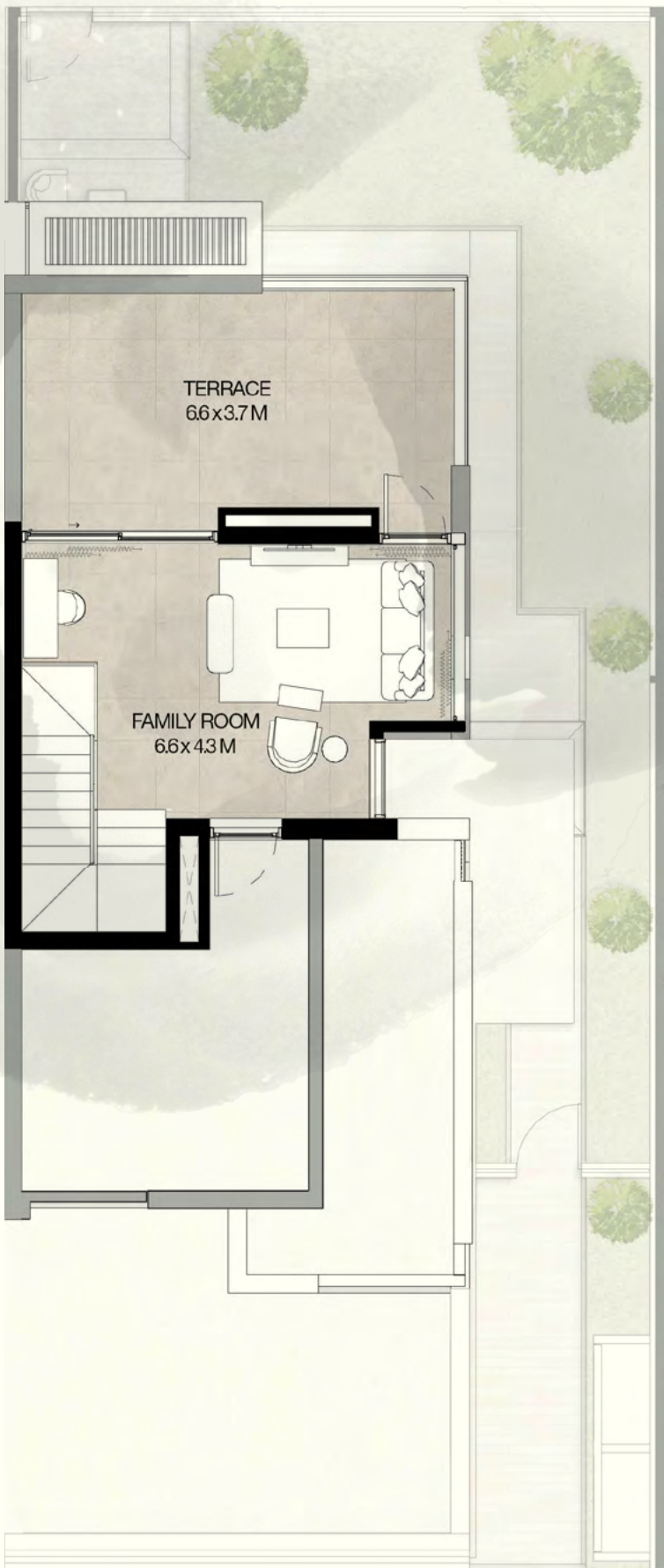
KEY PLAN



GROUND FLOOR



FIRST FLOOR



ROOF FLOOR

Disclaimer: Plans, details and unit orientation included are indicative only and are subject to change by the developer/seller at its sole discretion without notice and/or liability. All images, including features, finishes, furnishings, view and scale are illustrative only. Final areas, orientation, dimensios, layout and materials may differ from those stated.